



1. Single-cable USB connection
2. Camera ON, LED indicator
3. Compatible with all 26mm X 36TPI industrial long working distance objectives, and auxiliary lenses.

Objective not included



A division of MultiProbe™, makers of the Atomic Force Prober (AFP)

What's In the Box

The MPZoom microscope is complete with its own internal LED light source and 5Mp camera, with up to 50:1* zoom functionality; includes software installation CD and USB cable.

*When using a 10X or 20X objective

Advanced Settings

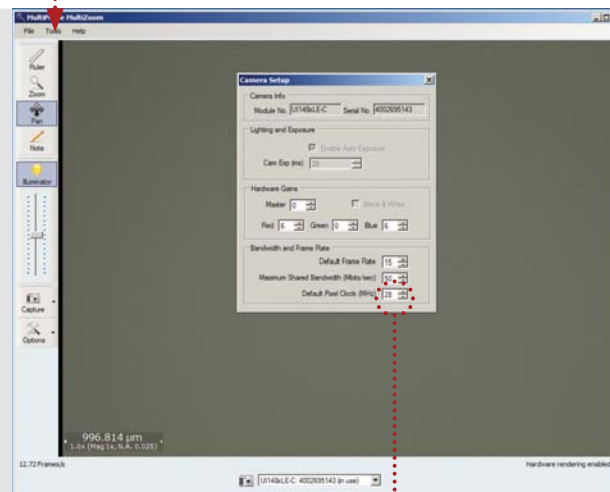
Found at the top of the screen under TOOLS

Adding additional USB devices: It's possible to run multiple cameras on available USB ports. However, adding any additional USB device to your computer may affect the proper performance of your MPZoom. You will be able to accommodate for this within your **Advanced Settings** option.

If image movement is jerky:

1. Select ADVANCED FEATURES from the TOOLS menu.

Click TOOLS for ADVANCED FEATURES



Decrease the PIXEL CLOCK VALUE

2. Decrease the PIXEL CLOCK VALUE. **Do not adjust other settings without some guidance.**

If your frame rate is too slow:

Increase the PIXEL VALUE CLOCK.

For assistance, please contact [MPZoom Support](#).

Support

For assistance setting up or troubleshooting your MPZoom camera, please contact:

support@multiprobe.com

or visit www.MPZoom.com/support



QUICK START

This Quick Start Guide will help you get familiar with your MPZoom Plug and Play microscope

- What's In the Box
- Basics
- Software/Hardware Installation
- Using Your Tools
- Advanced Settings
- Support



A division of MultiProbe™, makers of the Atomic Force Prober (AFP)



Basics

Compatibility: Windows XP™, Vista™, 7™

Hardware Requirements:

1. **USB:** Recommended USB 2.0 (min. USB 1.1)
2. **Monitor resolution:** minimum 800x600
3. **Video card:** recommended, open GL 2.0 (min. Open GL 1.3)

Recommended Compliant Video Cards

Open GL 2.0		
ATI	Nvidia	Intel
Radeon 9500	GeForce 6000 or greater	GMA 3000-Series
Radeon X-Series	Quadro FX	GMA 4000-Series
		GMA HD

Minimum Requirements for Video Cards

Open GL 1.3		
ATI	Nvidia	Intel
Radeon 7000-Series	GeForce 3-series or greater	GMA 900-series
Radeon 8000-series	GeForce 4 TI-series	
Radeon 9000-series	Quadro FX	

Software & Hardware Installation

Approx. 5 minutes. Use installation CD or download software from the web: www.MPZoom.com/software

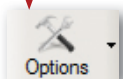
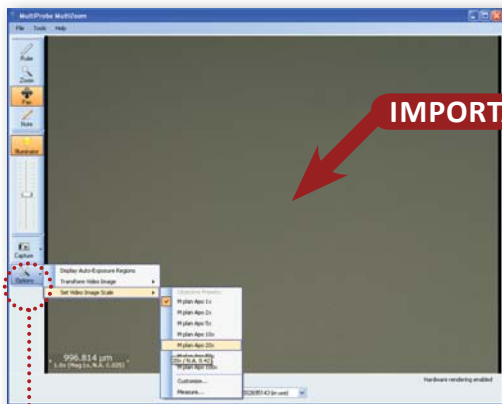
1. Click through installation wizard. You will need to go through **two** installations. When the first installation is complete, a second wizard will appear to prompt you.

NOTE: A warning box may appear on your screen ignore it and click continue.



This warning is common for many peripheral drivers that have not registered a digital signature with Microsoft. Continuing your installation of the software will not destabilize the correct operation of your system.

2. Plug the microscope into a USB port on your PC.



3. Calibrate your ruler: Immediately after installation is complete, select your objective from the OPTIONS drop down menu.

Using Your Tools

Tools can be accessed through an intuitive TOOLBOX or by right clicking your mouse anywhere in your image area.

Toolbox Customization: The default position of the TOOLBOX is on the left-hand side of your image area. However, to optimize your workspace, tools may be moved to the top. Click and drag each segment to the top of the screen.

Ruler: Left-click a point on the image area and drag.



- Scales to selected objective lens
- Measures one area at a time
- Displays the total distance

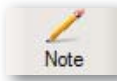
Zoom: There are three methods to zoom:



- Use the icon,
- Right-click anywhere on image;
- Use the mouse wheel.



Pan: Right-click screen and drag. Accessible in any mode.



Open a new notation box: Click icon in the TOOL BOX and then left-click on image area. A text input box will appear.

Move Notation Pointer to another area: Hover over point of origin until a CROSS-HAIR symbol appears, and then left-click and drag the point to another location.

Move Position of Note: Hover over note, until a CROSSED ARROWS symbol appears. Left-click text block and drag it to another position.

Edit or delete note: Right-click notation and select EDIT or DELETE

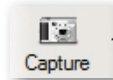
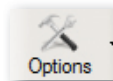


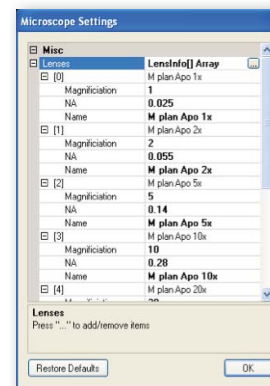
Image Capture: Captures RULER and SCALE bar along with image. Images can be saved in **BMP, png** and **jpeg** formats.



Options: Provides a drop-down menu for selecting image orientation, display and objective lenses.

> Transform Video Image: Drop-down menu > Flip Vertical, Flip Horizontal and Flip CCW. The counterclockwise option offers a drop-down menu that allows users to choose 90, 180 or 270 degree increments.

> Set Image Scale: 2X, 5X, 10X, 20X, 50X, 100X



> Customize: If your objective is not listed in the MPZoom built-in Camera Settings, add your own objective nomenclature. The ruler will automatically reset to adhere to your specifications.