

# SEMIAUTO 2.2.0 UPGRADE

July 10, 2008

Installing SemiAuto 2.2.0 will also install new versions of all the National Instruments drivers used by the software. These include NI Motion, NI IMAQ and NI VISA. In addition, development of SemiAuto has been migrated to LabView 8.5.1 so this installer will also upgrade the Runtime Engine and all its associated files. This upgrade will also bring NI Measurement and Automation Explorer (NI-MAX) up to version 4.4.

As you can see this is a massive upgrade. The changes made to SemiAuto itself, are described in detail at the beginning of the new SemiAuto manual that gets installed with this update.

The procedure is relatively straight forward but requires more steps than previous procedures. Two particular differences are:

1. Because hardware drivers are being updated, all the motion and vision boards will show up as “new hardware” when the computer is re-started after the installation is complete.
2. The new NI-Motion drivers will require that the Firmware for the motion control cards be updated.

## Upgrade procedure in detail.

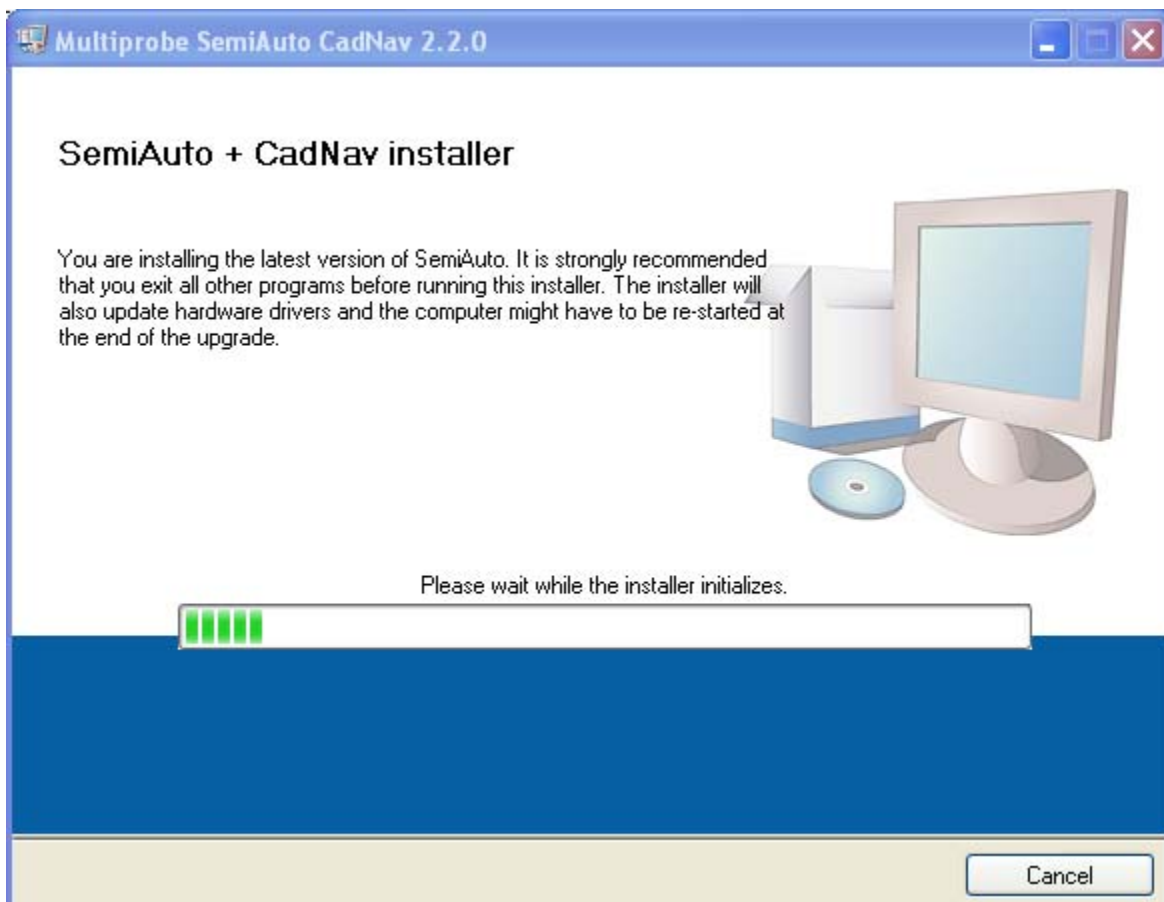
Quit all the programs running on the SemiAuto computer.

Unzip the installer file.

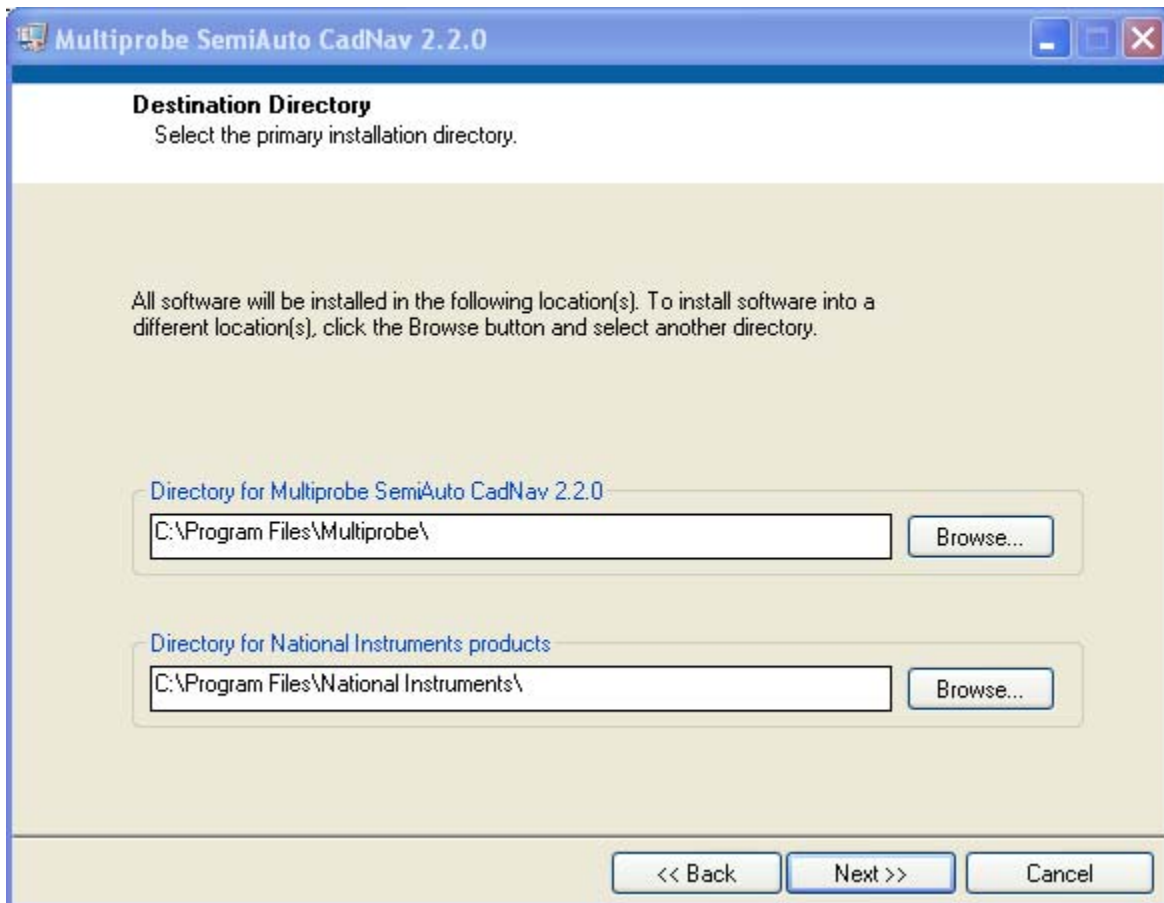
Open the Installer folder.

Open the Volumes folder and double click on the Setup.exe program

The following window will come up

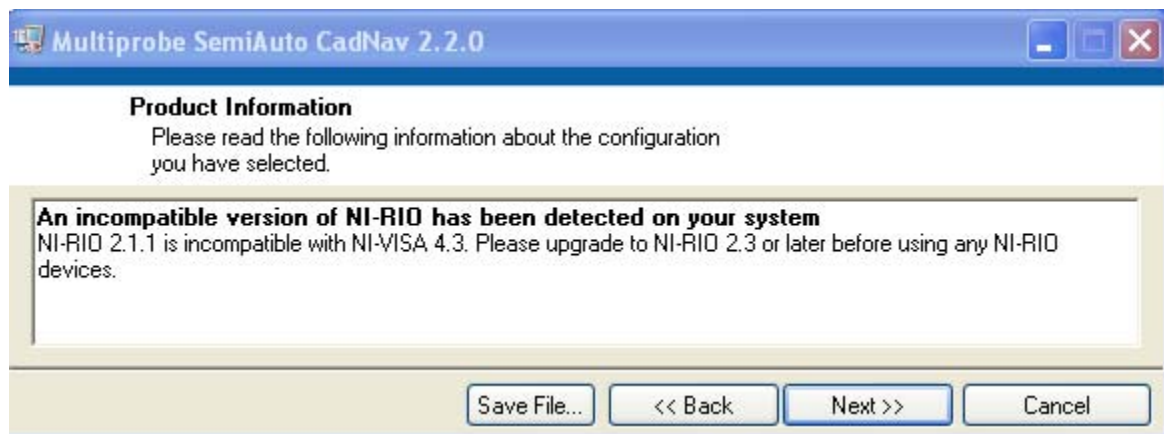


Followed by:

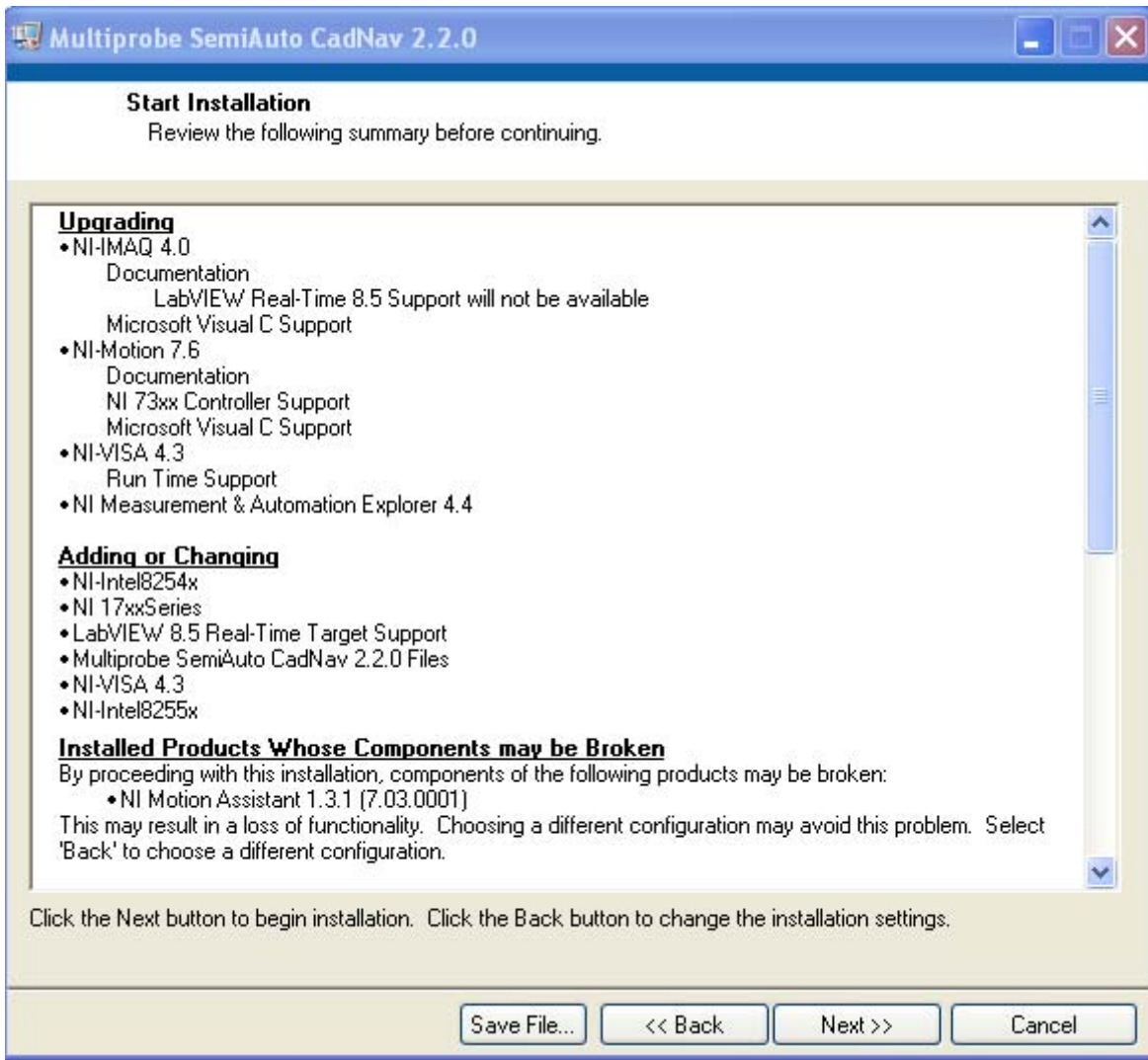


Click **Next>>**

A message might come up indicating that the version of NI-RIO is incompatible with what you are about to install. This is OK, just click **Next>>**



The Next screen will show a list of all the components to be installed on your computer:



Somewhere, buried in the list you'll find SemiAuto CadNav 2.2.0.

**Note:** If you get the message on the list that NI Motion Assistant may be Broken, just ignore it. None of MultiPorbe's software uses NI Motion Assistant.

Click **Next>>**

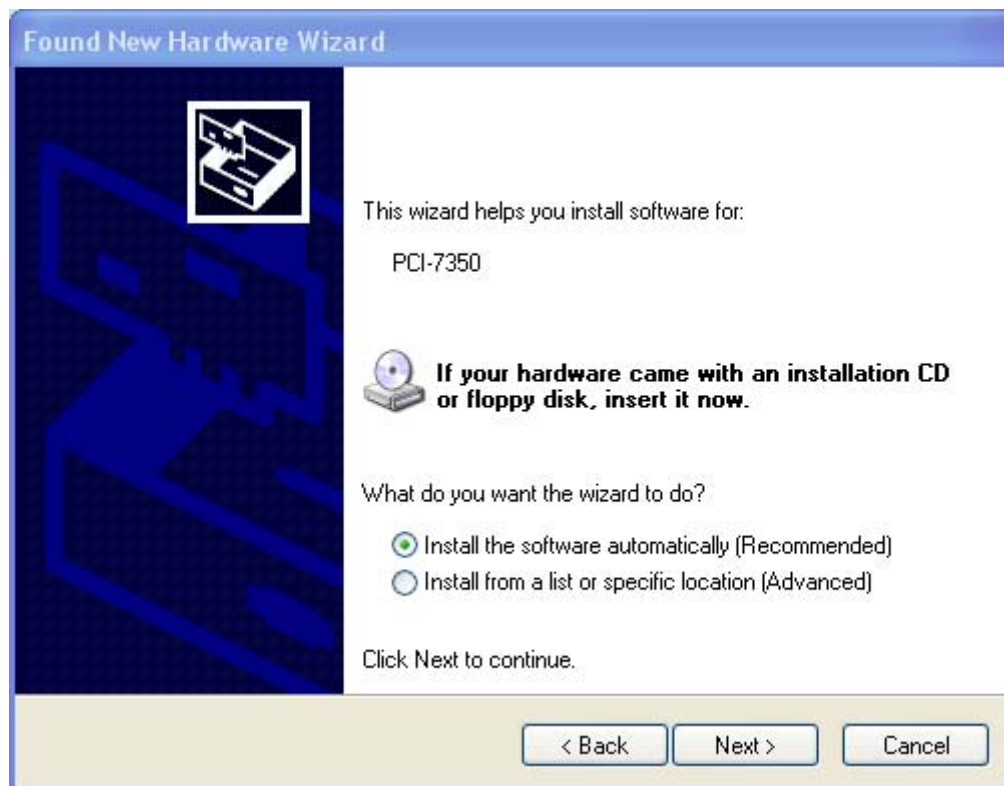
After the installation is complete you will need to re-start the computer.

## Hardware Driver Update

After the computer starts up, four messages will come up saying that the computer has found New Hardware and the appropriate driver needs to be installed.



Click **Next>** to complete the driver installations. These steps will repeat 3 times, once per new NI Motion board.



And a fourth time for the NI Video board



# NI-Motion Firmware Update

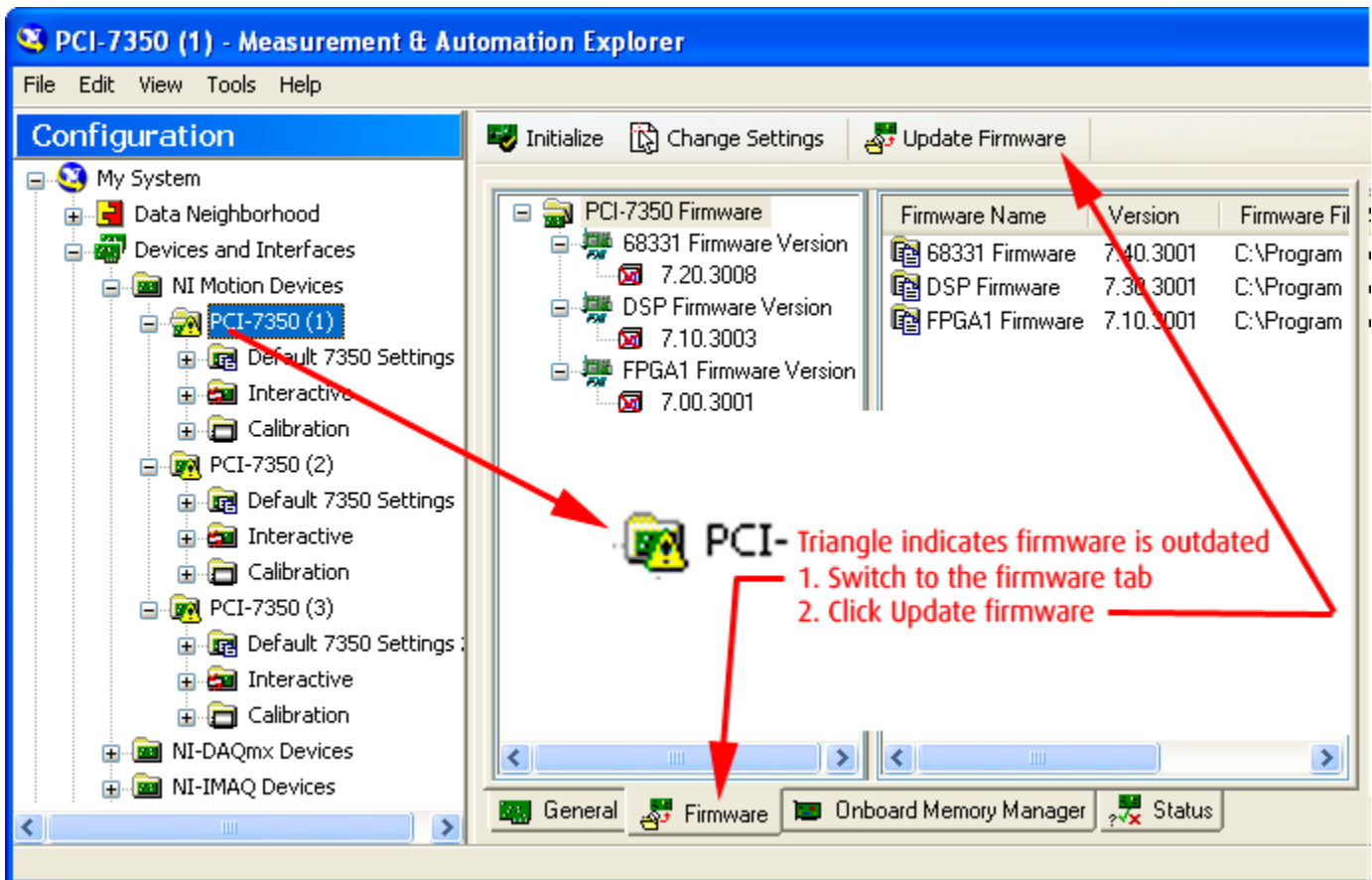
The new NI-Motion drivers require that the **firmware** for the NI-Motion board be updated. The procedure is relatively simple and done with NI Measurement and Automation Explorer (MAX).

Launch NI MAX. An icon for the program will be on the desktop.



When the window comes up, expand the Devices and Interfaces item and then expand the NI Motion Devices folder. You will notice that the PCI-7350 icons have a yellow triangle in them indication that the Firmware is out of date.

Switch to the Firmware tab at the bottom of the right panel.

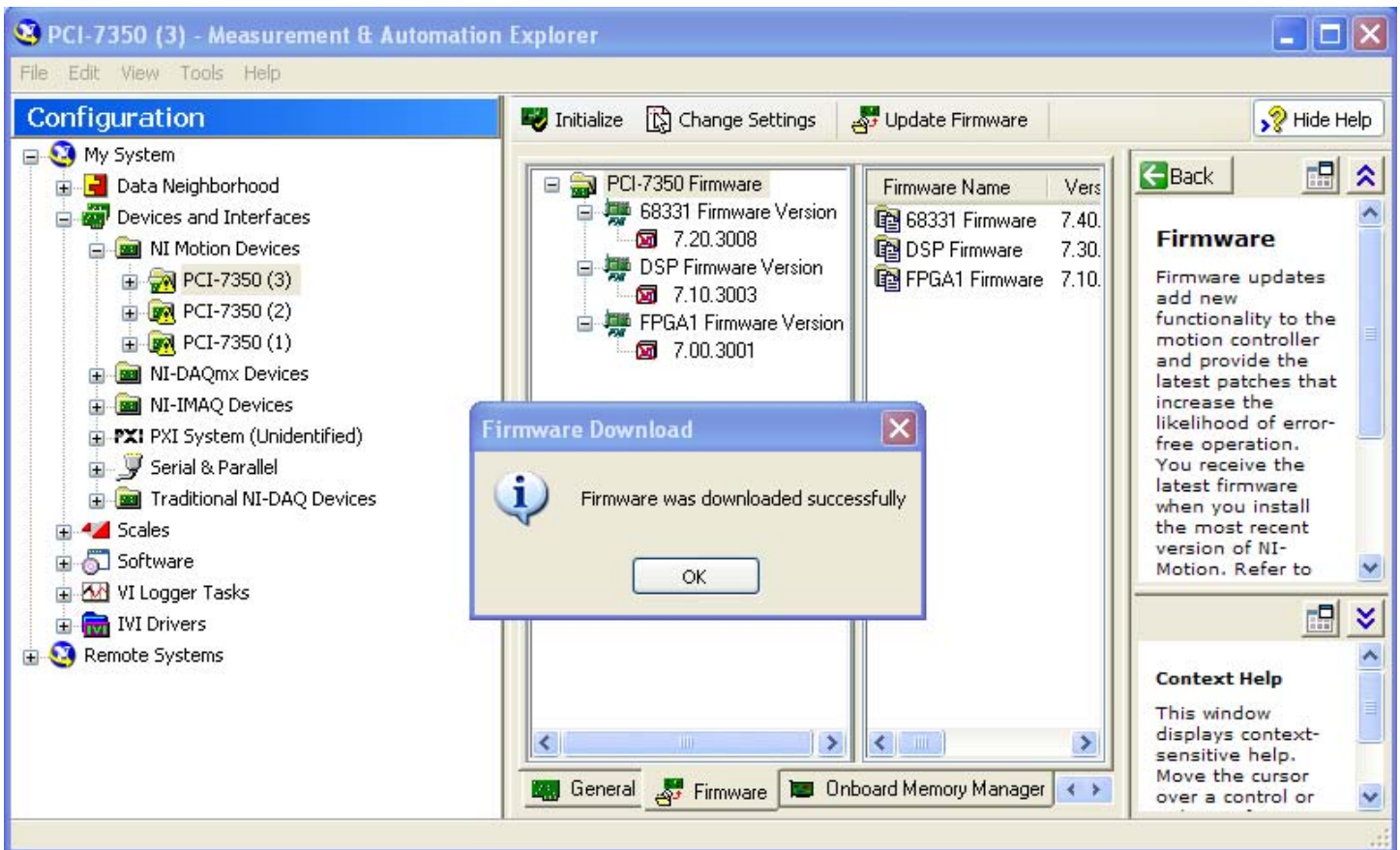


Select one of the three PCI-7350 folders on the left panel and click Update Firmware on the top of the right panel.

During the update, the following indicator will come up.



and when the procedure is complete, you will be congratulated..



Repeat the procedure for the other two NI-Motion boards.

Now you are ready to Start SemiAuto.

One last thing, when SemiAuto starts, Windows might pop up a Firewall warning message. Make sure you click Unblock.

